



**ParentTV**  
**FOR EARLY LEARNING  
CENTRES**

[www.parenttv.com](http://www.parenttv.com) | [info@parenttv.com](mailto:info@parenttv.com)

# WHAT IS PARENT TV?

At ParentTV we know that you want to help parents in your centre to raise happy and healthy children. To do that, you need a way to equip them with tools and strategies to address the parenting issues that come their way.

The problem is there is not enough time or expertise for one person to address all of the issues families may encounter which can make you feel overwhelmed when trying to be who your families need. We believe parents should feel equipped and supported to raise great kids.

We understand how exhausting it can be trying to give parents the tools that make a difference which is why we have created an innovative online platform with over 37 world leading experts sharing hands on strategies to support the children in your care.

## HERE'S HOW WE DO IT:

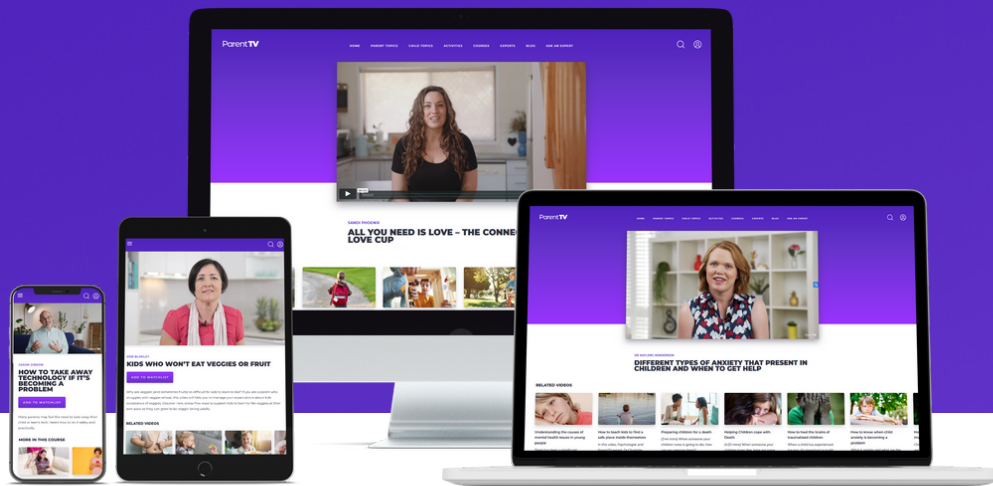
1. Join the ParentTV community
2. Support staff development
3. Share the content with your parents
4. Change the lives of children

So, create a ParentTV account for your centre so you can stop feeling overwhelmed and have confident educators, encouraged parents, and successful children.

**ParentTV**

[www.parenttv.com](http://www.parenttv.com) | [info@parenttv.com](mailto:info@parenttv.com)





ParentTV offers hundreds of on-demand videos and courses with content designed to support those who support children from infancy through to teenage years.

**1000 +**  
videos

**50**  
parent  
courses

**400+**  
blog articles

**20+**  
hrs of professional  
development

**37 +**  
experts on  
the platform

Feel more confident and connected with access to reliable advice on a wide range of topics from Australia's leading parenting and educational experts.



**Maggie Dent**  
Parenting Educator  
Behaviour &  
Development



**Dr Kaylene Henderson**  
Psychiatrist  
Mental Health



**Dr Justin Coulson**  
Behaviour &  
Development



**Dr Kristy Goodwin**  
Technology &  
Wellbeing



**Sandi Phoenix**  
Behaviour  
Consultant



**Dr Vanessa Lapointe**  
Registered  
Psychologist



**Teacher Tom**  
Preschool  
Educator



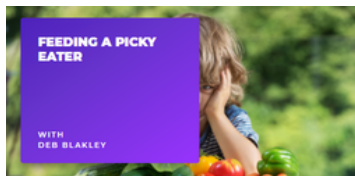
**Nathan Wallis**  
Neuroscience  
Educator

General Parenting | Behaviour | Technology | Mental Health | Social Wellbeing | Friendship |  
Developmental Milestones | Sexuality Education | Developmental Conditions | Nutrition | Health |  
Protective Education | Sleep | Coparenting | Mindfulness | Yoga | Music | Dance

# Prevention

Supporting parents  
before you hit a crisis point with

- Curated content for your newsletters
- Expert webinars for parents
- The ability to share targeted content



# Development

Ongoing parent and  
staff support by

- Focused social and emotional development of students
- Over 20 hours of structured learning
- Bite-sized weekly encouragement and support

# CONTENT THAT CLOSSES THE LOOP



# Intervention

Providing timely support  
during a crisis through

- Real-time support
- Diagnosis support
- Micro courses on child issues
- Full parent and staff access to our platform



- ✓ Research based advice that's easy to understand.
- ✓ Short, smart videos for busy parents, carers and educators helping to raise kids.
- ✓ New content added **monthly** with webinars from our experts on topics relevant to your centre.

# SUBSCRIPTION TYPES

## ADMINISTRATOR SUBSCRIPTION

Number of Accounts: 1  
Pricing \$89 per month  
Unsubscribe at any time

This subscription includes one account that allows this person to access and share content with the families and staff in your centre through social media, newsletters, communication apps, and privately with parents. You can decide what, when, and how you send these helpful resources.

This subscription includes an administrator account, analytics dashboard and also includes our weekly social media share pack to grow your digital presence with meaningful content. Each Monday we'll send you curated links to share, beautifully designed quote cards from our experts, and blog posts.

## CENTRE SUBSCRIPTION

Number of Accounts: Multiple  
Pricing: \$1000 - \$1500 per year  
Annual subscription per centre

This subscription makes the entire content library accessible to all of the staff and families in your centre. Staff members can share content directly with the parents of the children they support, and parents and staff can create their own free account with your unique code to consume content on-demand.

The centre subscription also includes an administrator account, user management, analytics dashboard, and the weekly social media share pack.

Number of children	Cost per Year
0 - 100	\$1000
101 - 200	\$1500

*Please note: Pricing excludes GST*

## MULTIPLE CENTRE NETWORK SUBSCRIPTION

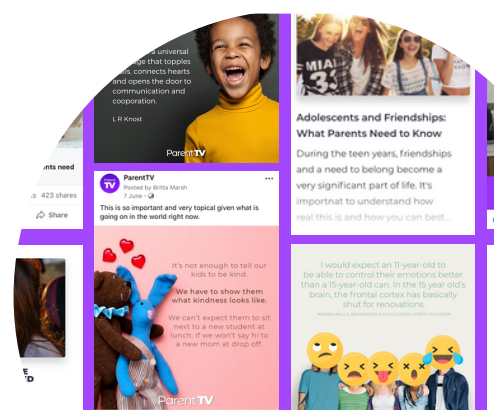
Number of Accounts: Unlimited  
Pricing: **Contact us for a quote**

**Get in touch or sign up**

[www.parenttv.com](http://www.parenttv.com) | [info@parenttv.com](mailto:info@parenttv.com)

## SOCIAL MEDIA PACK

Each week we send you a selection of relevant content to help your parents and staff stay up to date, enhance your parental support efforts, engage your community, and build your staff capabilities.



# TESTIMONIALS

---



*ParentTV is a must have for all parents and educators. With so many parents relying on information from the internet, it is great to have a platform where **respected experts share expert information**. It is great for teachers to be able to share this information with each other and parents.*



**CHILDCARE CENTRE DIRECTOR**



*We use ParentTV for our **staff PD** and helpful **content for our social media and app newsletters**.*



**CENTRE OWNER**